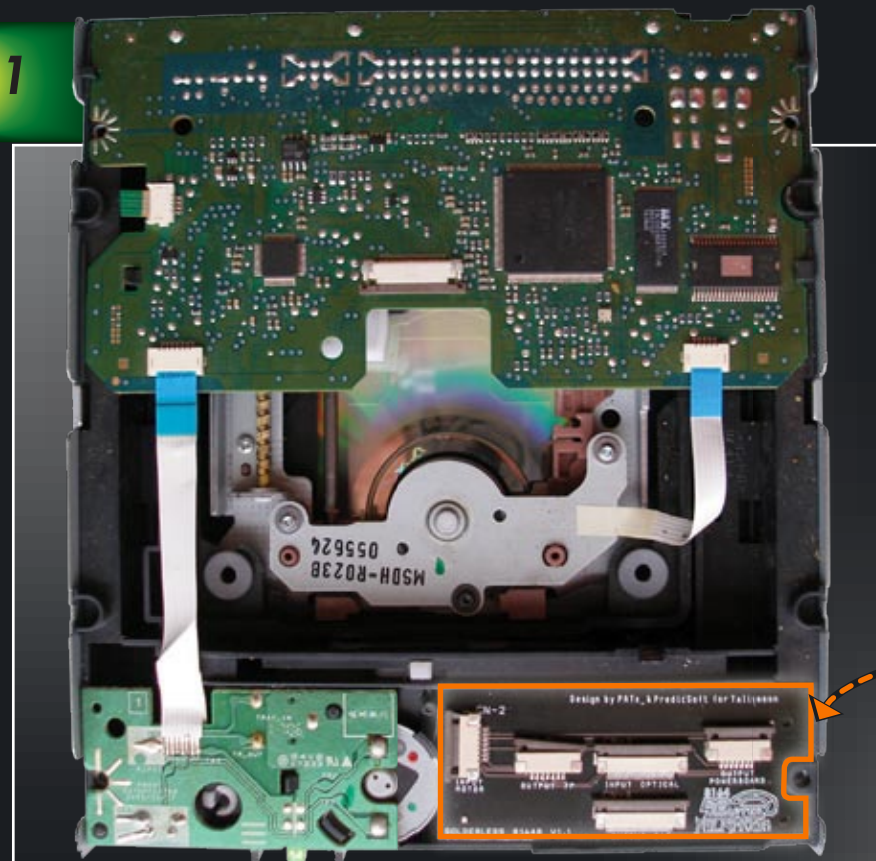
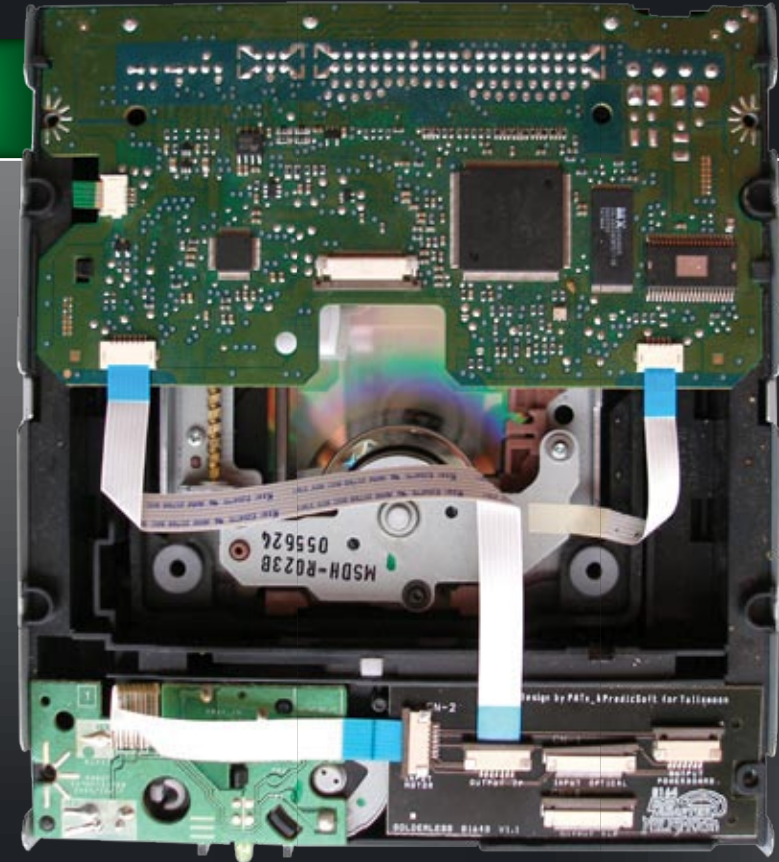


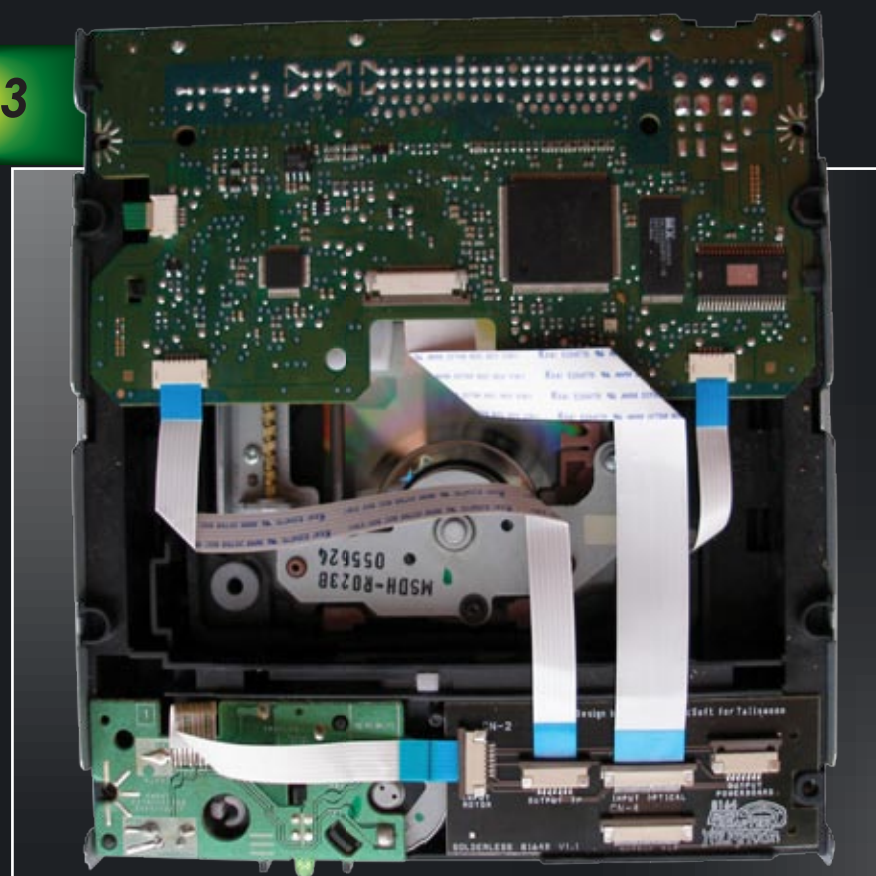
8164 DVD ADAPTER



1 First remove the lens Flat Flex Cable (FFC) and install the solderless board as shown above:



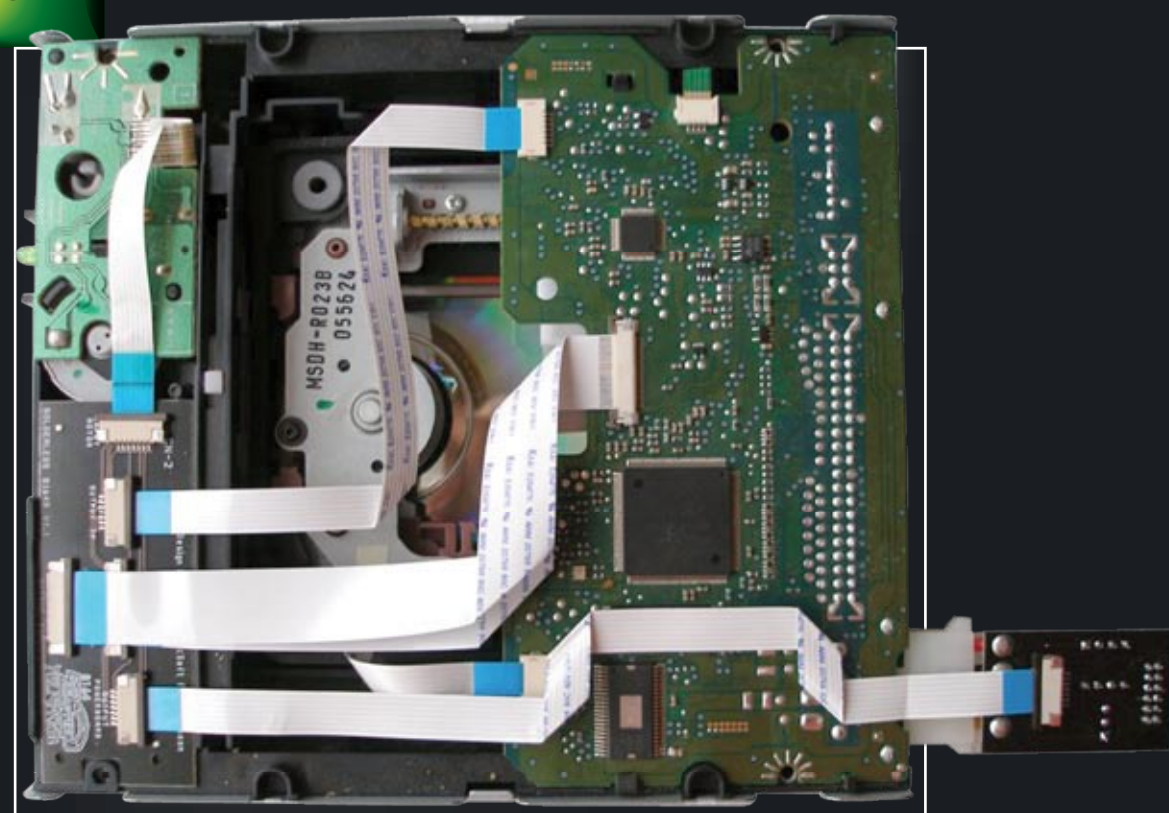
2 Now fold the small 8164 motor board FFC cable and plug it to the 8164 solderless board. Plug the S shaped FFC where the motor board was plugged.



3 Now plug the longest lens FFC cable to the solderless board at one end and to the lens at the other !!! (note that FFC connectors will be facing up on the lens connector)



4 Now plug the shortest lens FFC cable from the solderless board to the 8164 board. (note that FFC connectors pins will be facing up on the 8164 board connector).



5 Plug the last FFC to the power board which is plugged into the drive molex connector.



check for all our products on :
www.talismoon.com